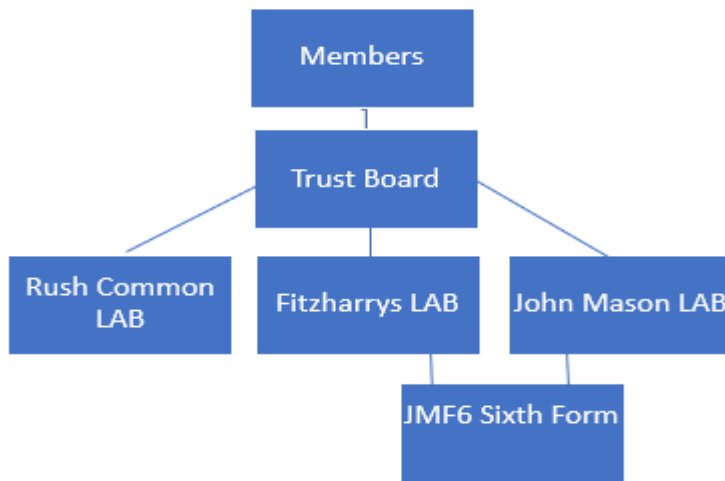




## Governance Structure



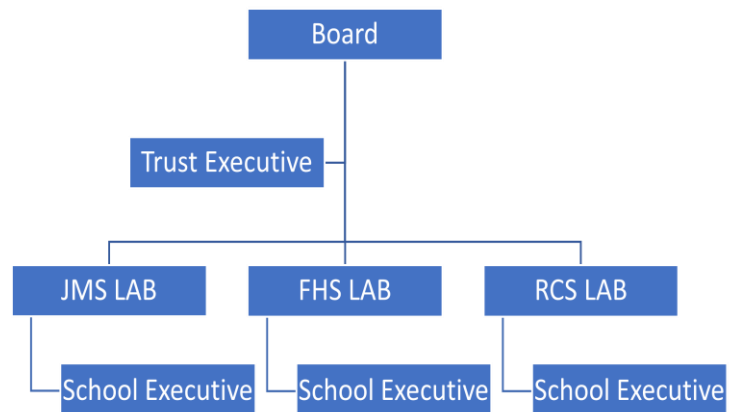
The Trust was formed in **2018**.

A family of **3** schools supported by a central team.

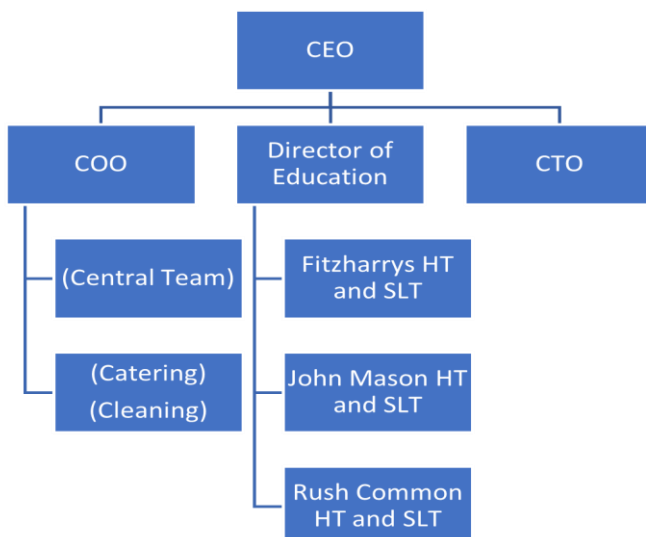
## Governance and Executive Structure

3 local boards together comprising:

Over 50 volunteer members with a range of experiences and skills, collective passion, commitment, and knowledge – a powerful combination supporting school improvement – add to this the executive support from leaders and clerks, that’s a group of nearly 60 ... **working together**.



## Executive Structure



**263** staff

**2177** pupils

Just under **£13M** income

**£26M** tangible assets

